

MicroDerm 360[®]



MicroDerm PRO[®]

INSTRUCTION BOOKLET



Hello & Welcome to Your New MicroDermPRO® by MicroDerm360®

Thank you for purchasing the MicroDermPRO by MicroDerm360

The patented MicroDermPRO combines medical grade, stainless steel, diamond tip technology with deep vacuum suction to bring you the VERY BEST at-home microdermabrasion experience. Equipped with a unique swivel neck, the MicroDermPRO allows you to access even the most hard to reach places for head-to-toe microdermabrasion in the comfort of your own home.

Once you have read the instructions, you will see how easy your MicroDermPRO is to use, and how quickly you'll see a difference in your skin.

With regular, once-a-week use, your skin will GLOW.



Table of Contents

Welcome	ii	Suctioning Control Settings	14
WARNINGS - Consult Your Doctor If	4	Replacing the Filter	15
What is Microdermabrasion?	5	MicroDermPRO Treatments -	
What is in Your MicroDermPRO Kit?	7	LET'S GET STARTED!	17
Get acquainted with MicroDermPRO's		Suggestions for Use	20
Swivel Neck	9	Caution	21
Diamond Tips	11	Warranty	22
Power: A/C Plug	13		

Warnings

CONSULT YOUR DOCTOR IF YOU HAVE ANY OF THE FOLLOWING CONDITIONS BEFORE USE OF THE MicroDermPRO:

- Undiagnosed lesions
- Active Eczema
- Psoriasis lesions
- Herpes
- Recent Herpes outbreak
- Warts
- Sunburn
- Active Rosacea
- Unstable Diabetes Mellitus
- Disorders of the Autoimmune System
- Pregnancy
- Skin Cancer
- Vascular lesions

DO NOT USE if you are taking oral blood thinners (anti-coagulants).
NOT SUITABLE for delicate private body areas or eye area use.

What is Microdermabrasion?

Microdermabrasion, also known as “microderm”, is one of the easiest and most effective at-home, anti-aging treatments available. Microdermabrasion is a non-surgical, non-invasive skin resurfacing technology. Utilizing the dual power of mechanical exfoliation and deep vacuum suction, microdermabrasion removes the old, dead skin cells, revealing the healthier-looking dermal layer underneath.

Regular microdermabrasion treatment also makes it easier for expensive skin care products to penetrate the skin, helping to ensure that you gain the maximum benefit from them.



What's In Your MicroDermPRO® Kit

MicroDermPRO Is Designed For Worldwide Use

① **MicroDermPRO** Microdermabrasion tool
(A clean filter is already installed)

② **Face Tip**
This is already fitted to your MicroDermPRO

③ **Extra Large Body Tip**

④ **A/C Plug**
Worldwide Use (100-240V, 50-60Hz)

⑤ **Filter (100 pcs.)**

⑥ **Tweezers**

⑦ **Velvety Travel Pouch**

⑧ **Instruction Manual and
Manufacturer's 1-year
conditional warranty**



⑧



Get Acquainted with MicroDermPRO® Swivel Neck

CAUTION! Depress dimple **BEFORE** and **WHILE** rotating swivel neck!



CHOOSE YOUR FAVORITE ANGLE:

1. Locate green dimpled button, and, with your thumb, depress the dimple.
2. Grasp your MicroDermPRO above the green band.
3. Rotate neck of MicroDermPRO 180-degrees clockwise.
4. Release button.

9.



TO RESET SWIVEL NECK:

1. Locate green dimpled button, and, with your thumb, depress the dimple.
2. Hold your MicroDermPRO above the green band.
3. Rotate neck of MicroDermPRO 180-degrees counter clockwise.
4. Release button.

10.

Diamond Tips

REMOVING DIAMOND TIPS

1. With device unplugged, hold base of diamond tip above white line.
2. Hold MicroDermPRO at base and pull diamond tip straight up and off the machine.

BODY & FACE



BODY ONLY



SANITIZING DIAMOND TIPS

Always make sure to remove your diamond tip after use and sanitize by cleaning with your preferred facial soap and a soft brush such as a toothbrush. Allow to air dry before next use.

For multi-person use, we strongly recommend that you purchase additional diamond tips so that all users can have their own diamond tip.

WARNINGS:

Dropping your diamond tip, or rubbing the diamond tips together can cause damage. DO NOT USE DAMAGED DIAMOND TIPS. REPLACE DAMAGED TIPS IMMEDIATELY.

Run your finger over the diamond microderm tip surface. Feel how rough the surface is. Be sure it is a completely consistent surface and not damaged.



Power: A/C Plug

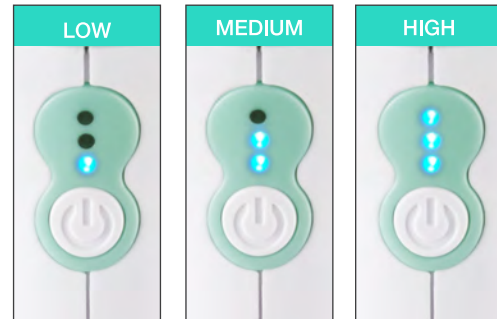
1. Locate and remove power plug from box.
2. Notice shape of notch at base of MicroDermPRO unit.
3. Match with corresponding cord end. Push corresponding cord end into base of the device and twist a quarter turn to lock into place.
4. Plug into wall.



Suctioning Control Settings

Locate the white on/off switch and push once. The unit will begin suctioning at a low level. This is a great level to start your microderm treatments. Depress the button again to increase the suction up to medium and then high levels. Depressing a fourth time will turn the unit off. UNPLUG AFTER USE.

- LOW** - One Blue Light
- MED** - Two Blue Lights
- HIGH** - Three Blue Lights



***PLEASE NOTE: DEVICE MUST BE PLUGGED IN TO USE - THIS UNIT IS NOT RECHARGEABLE.**

Replacing the Filter

Your MicroDermPRO comes preloaded with the Face Tip attached and a new filter.

Please note, in order to keep your MicroDermPRO in good working condition, *filters must be changed after every use*. Your manufacturer's conditional one-year warranty will be voided in the event you do not follow the manufacturer's guidelines. **DO NOT WASH OR RE-USE FILTERS.**

1. Locate the small plastic bag of filters underneath the black foam insert in the box and remove the enclosed tweezers.
2. Remove tip. (See P11). Locate the notch inside the top of the unit and place the tweezers in the notch to grasp filter. Practice removing and replacing the filter with the tweezers. As this is a new filter intended for your first use, replace it into the neck of the unit. **ALWAYS USE WITH A FILTER INSTALLED.**
3. Do not wash filters. Filters cannot be re-used. This will void your warranty.

MicroDermPRO® Treatments - LET'S GET STARTED!

1. Make sure you start with clean, dry skin - free of oil and make-up. Depress the dimple at the bottom of large green button to rotate neck of device to desired position. (See P9)
2. Notice that your MicroDermPRO is ready to use with a Face Tip already placed on your unit. (This tip is for use on your face, hands and smaller body areas.)
3. Locate and remove power plug from box. (See P13) Notice shape of the notch at the base of MicroDermPRO and match with corresponding cord end. Turn cord a quarter turn clock-wise to lock into place. UNIT MUST BE PLUGGED IN TO USE.
4. Locate the white on/off switch and push once. (See P14) The unit will begin suctioning at a low level. This is a great level with which to start your microderm session. Depress the button again to increase the suction up to medium and then high levels. Depressing a fourth time will turn unit off. UNPLUG AFTER USE.
5. Practice: Make a fist with your hand and bend your fist downwards. Notice the tightness of the skin on your fist - this is a great way to practice! Place the unit on the lowest suction setting and sweep in short, upward strokes from your knuckles toward your wrist.
6. Are You Ready to GLOW? Pull the treatment area of clean, dry skin tightly. For example, if you would like to start with your cheek, pull the skin tightly with one hand toward your ear. With the unit on the lowest setting, place the unit above your jaw and sweep in a short upward motion. Lift the unit off your skin at the top and place again at the jaw and sweep up, making 2-3 short passes.
7. To change out tips - ensure the unit is unplugged then remove tip (see P11) and replace with a different tip. Make sure to check your filter periodically for the need to replace if treating large areas of the body during a treatment session. Change filter after every use. (see P15)

8. With the unit unplugged, remove and wash the tip in your preferred facial soap with a soft brush, (like a toothbrush) then rinse and let dry completely before next use.
9. We recommend using your MicroDermPRO before bed, to allow your skin to calm while you are sleeping.
10. ALWAYS wear sunscreen when outside, ESPECIALLY after a treatment with MicroDermPRO.
11. Enjoy microdermabrasion treatments on the go with your velvety travel pouch!



Suggestions for Use

- Make no more than 2-3 passes over the same area during a treatment with your MicroDermPRO.
- Only use your MicroDermPRO on the same area i.e. face, once a week.
- Do not use your MicroDermPRO inside the bone around the eye, (orbital bone.)
- Treat small sections of skin using short, gentle upward sweeping motions, lifting off at the end.
- Make only UPWARD sweeps; do not go up and down when using your MicroDermPRO.
- Do not press into the skin. Glide the unit along your skin and let the suction do the work.
- Do not hold the device in one place over the skin.
- Do not move the device in circles.
- Do not drag the device in a downward motion.

Caution

PLEASE follow **all instructions** to avoid the risk of abrasions or slight bruising and always hold the skin taut.

Please note that the amount of dead skin on the filter is not an indicator of how well the device is working. Not everyone will see dead skin on the filter; this does not mean that your MicroDermPRO is not working – many factors are at play such as the climate in which you live and your skin type. Those living in more humid climates, or those with more oily skin, will see fewer dead skin on the filter – but be assured, the end results are the same.

Do not submerge the unit in water. This causes damage and voids the warranty.

Warranty

Every MicroDermPRO carries a one-year conditional warranty, which covers any problems resulting from normal use of the product. Be sure to follow the manufacturer's directions.

Manufactured and Distributed by Presser International, LLC

Questions? Please email info@microdermpro.com

Thank You!



© MicroDerm**360** All Rights Reserved

Manufactured and Distributed by Presser International, LLC

US and Foreign Patents
US Patents 10,098,653 / D737,441